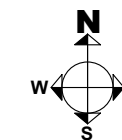


INTL. ATHEROSCLEROSIS SOCIETY

JUNE 9 - 15, 2018

metro toronto convention centre
SOUTH MEETING ROOM LEVEL 800



REVISION DATE:
5/30/2018 YS

BOOTH COUNT

Inventory as of 05/30/2018

Dimension	Size	Qty	SqFt
10'x10'	100	9	900
10'x20'	200	1	200
20'x20'	400	3	1,200
Totals:			2,300

BLDG. LEGEND:

LEGEND	
	FIRE HOSE CABINET
	FIRE PULL STATION
	EVACUATION LIGHT (4" OUT & 8" ABOVE FLOOR)
	ELECTRICAL ONLY SERVICE PORT AT CEILING LEVEL
	ELECTRICAL ONLY SERVICE PORT ON WALL
	ELECTRICAL/MECHANICAL SERVICE PORT AT FLOOR LEVEL
	FIRE EXIT
	WOMEN'S ROOM (WC)
	MEN'S ROOM (MC)
	STEPPED SWITCHED LIGHTING
	PUBLIC TELEPHONE
	FREIGHT ELEVATOR
	TV OUTLET
	DIMMER SWITCH
	TELEPHONE JACK
	SURFACE MOUNTED ELECTRICAL/TELECOMMUNICATION RACEWAY

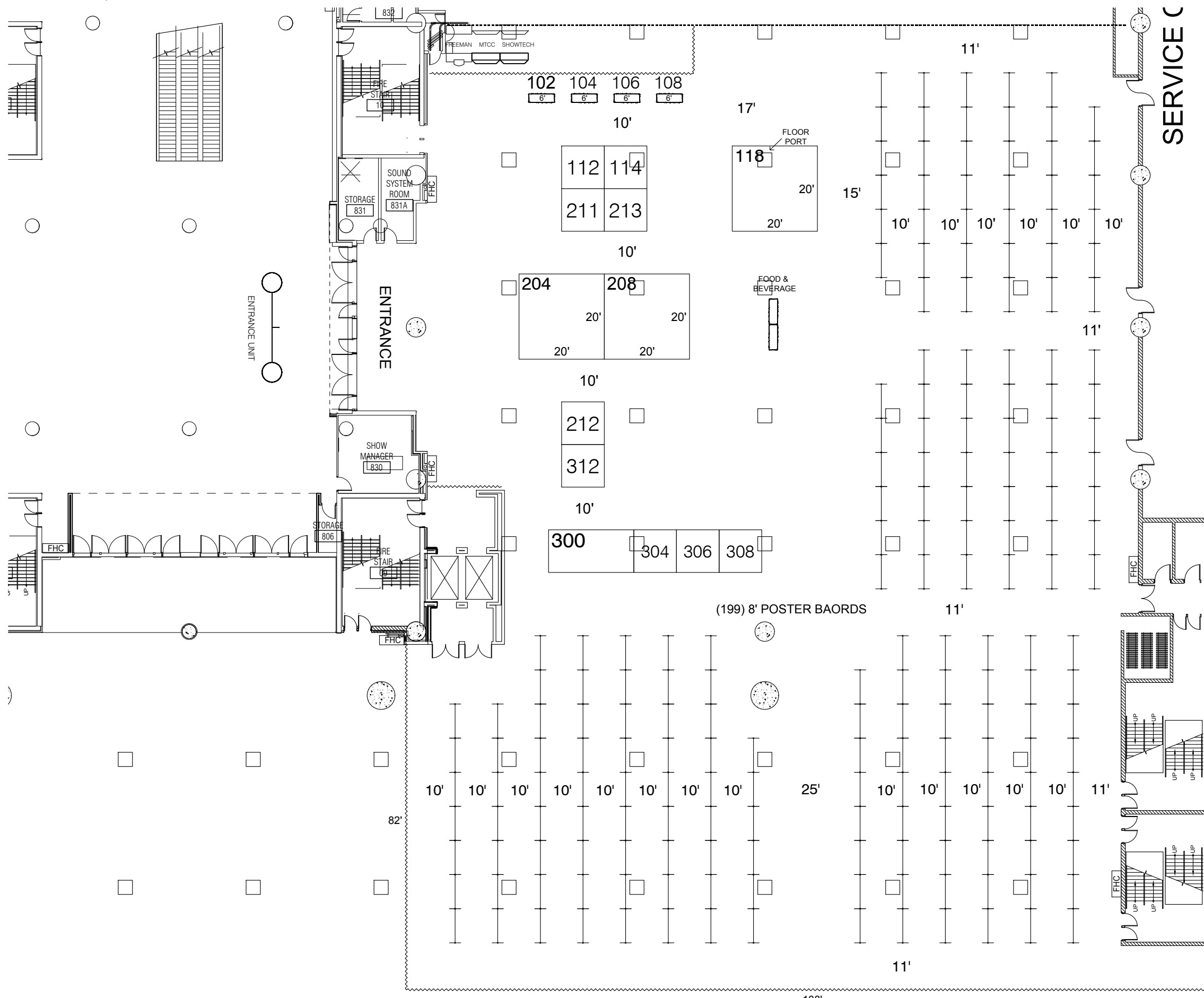


EXHIBIT HALL "F" (24,330 sqft.)

(199) 8' POSTER BAORDS

FREEMAN

DRAWING STARTED:
5/30/2018 YS
FILE PATH:
IAS 2018 FP 2.dwg
DRAWING NAME:
IAS 2018 FP 2
HALL NAME:
HALL F
JOB NUMBER:
-
ACCT. EXEC.:
MM

NOT TO SCALE

DISCLAIMER

EVERY EFFORT HAS BEEN MADE TO ENSURE THE ACCURACY OF ALL INFORMATION CONTAINED ON THIS FLOORPLAN. HOWEVER NO WARRANTIES, EITHER EXPRESSED OR IMPLIED ARE MADE WITH RESPECT TO THIS FLOORPLAN. IF THE LOCATION OF BUILDING COLUMNS, UTILITIES OR OTHER ARCHITECTURAL COMPONENTS OF THE FACILITY IS A CONSIDERATION IN THE CONSTRUCTION OR USAGE OF AN EXHIBIT, IT IS THE SOLE RESPONSIBILITY OF THE EXHIBITOR TO PHYSICALLY INSPECT THE FACILITY TO VERIFY ALL DIMENSIONS AND LOCATIONS.
© COPYRIGHT 2007, FREEMAN CO.
ALL RIGHTS RESERVED.

CONFIDENTIAL & PROPRIETARY
The information contained herein and attached to this email is the proprietary information of Freeman and by accessing the information, the recipient agrees to keep the information confidential and not disclose it to any third party without the prior consent of Freeman. Recipient also agrees to only use the information for its internal evaluation purposes and for no other purpose, without the prior consent of Freeman.